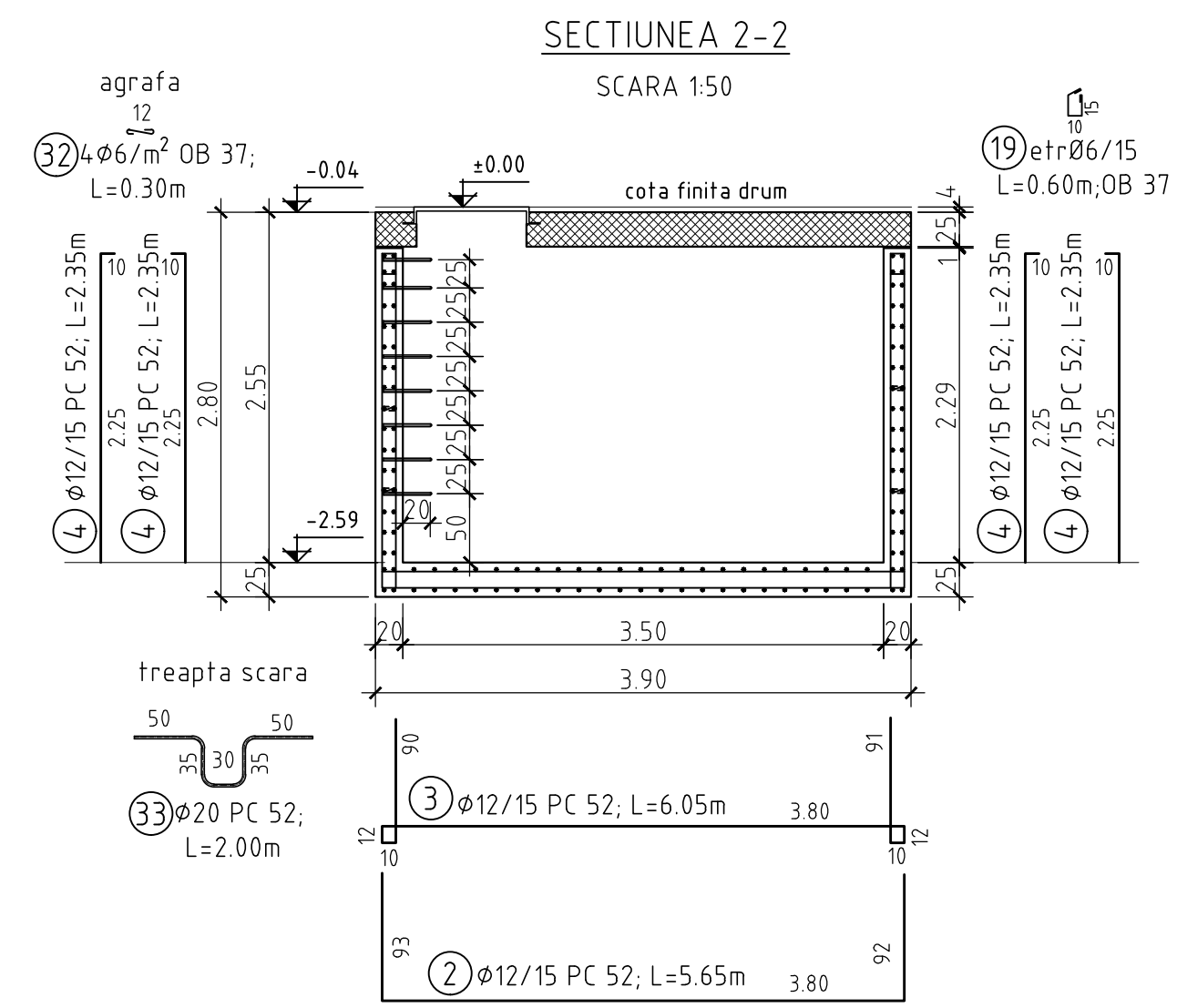
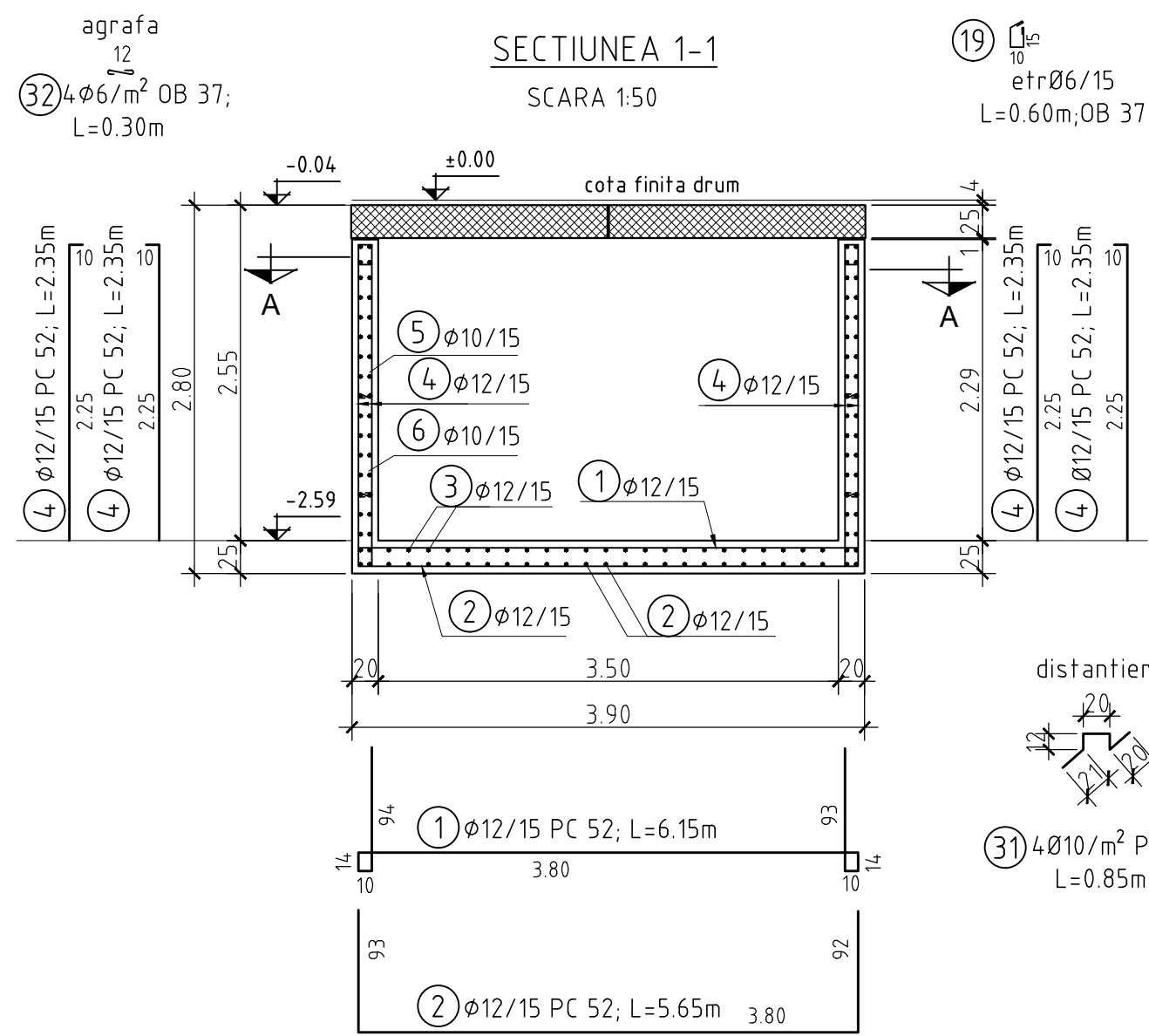
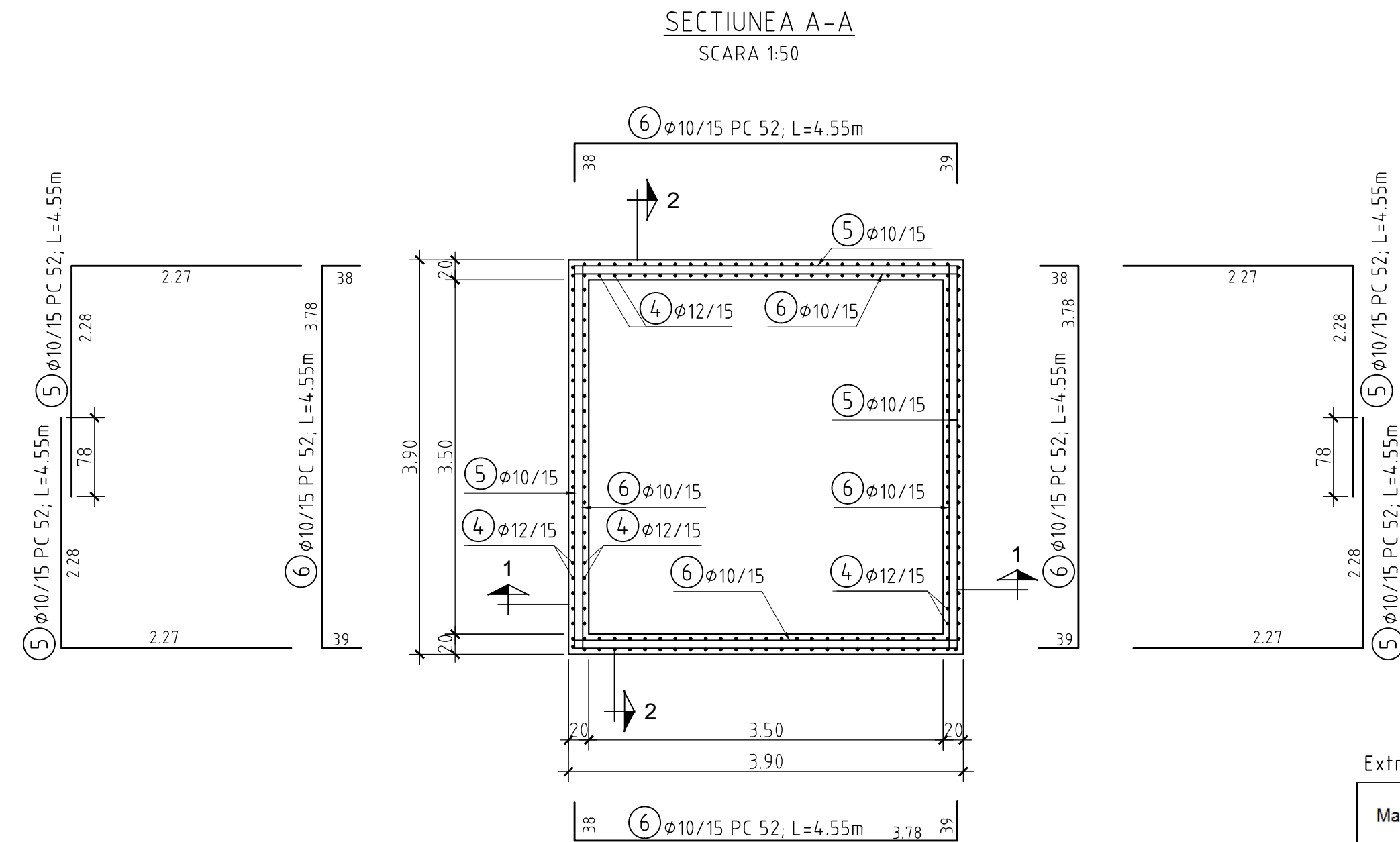
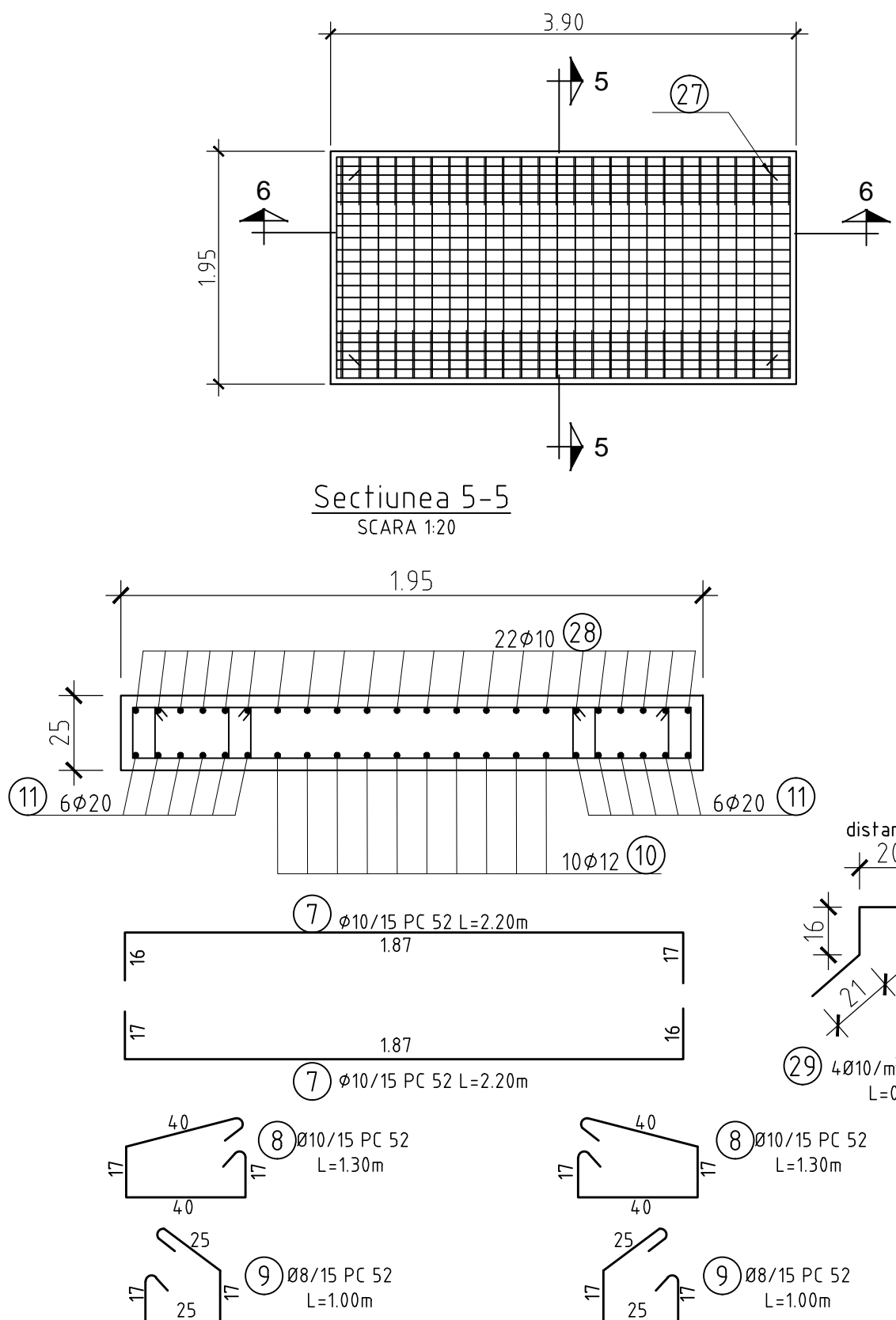


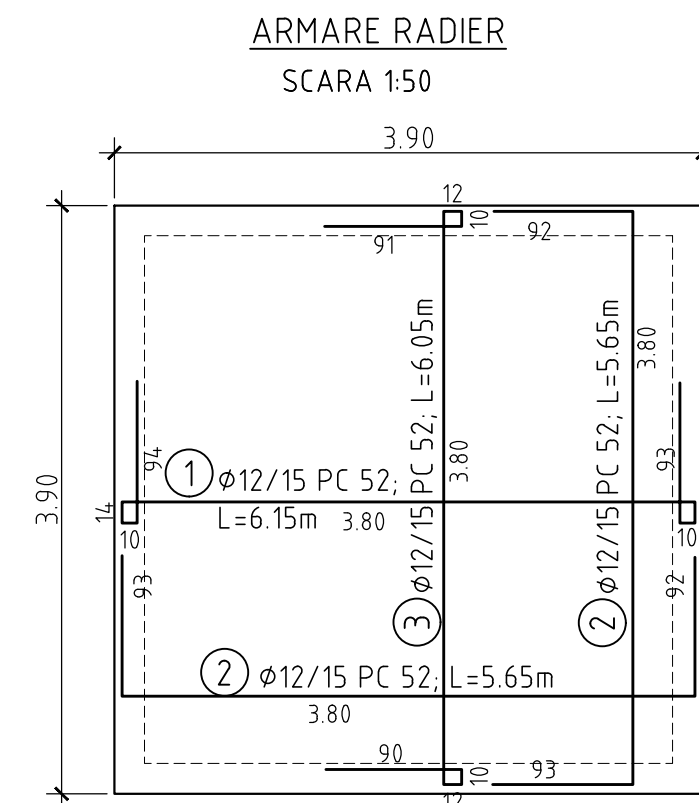
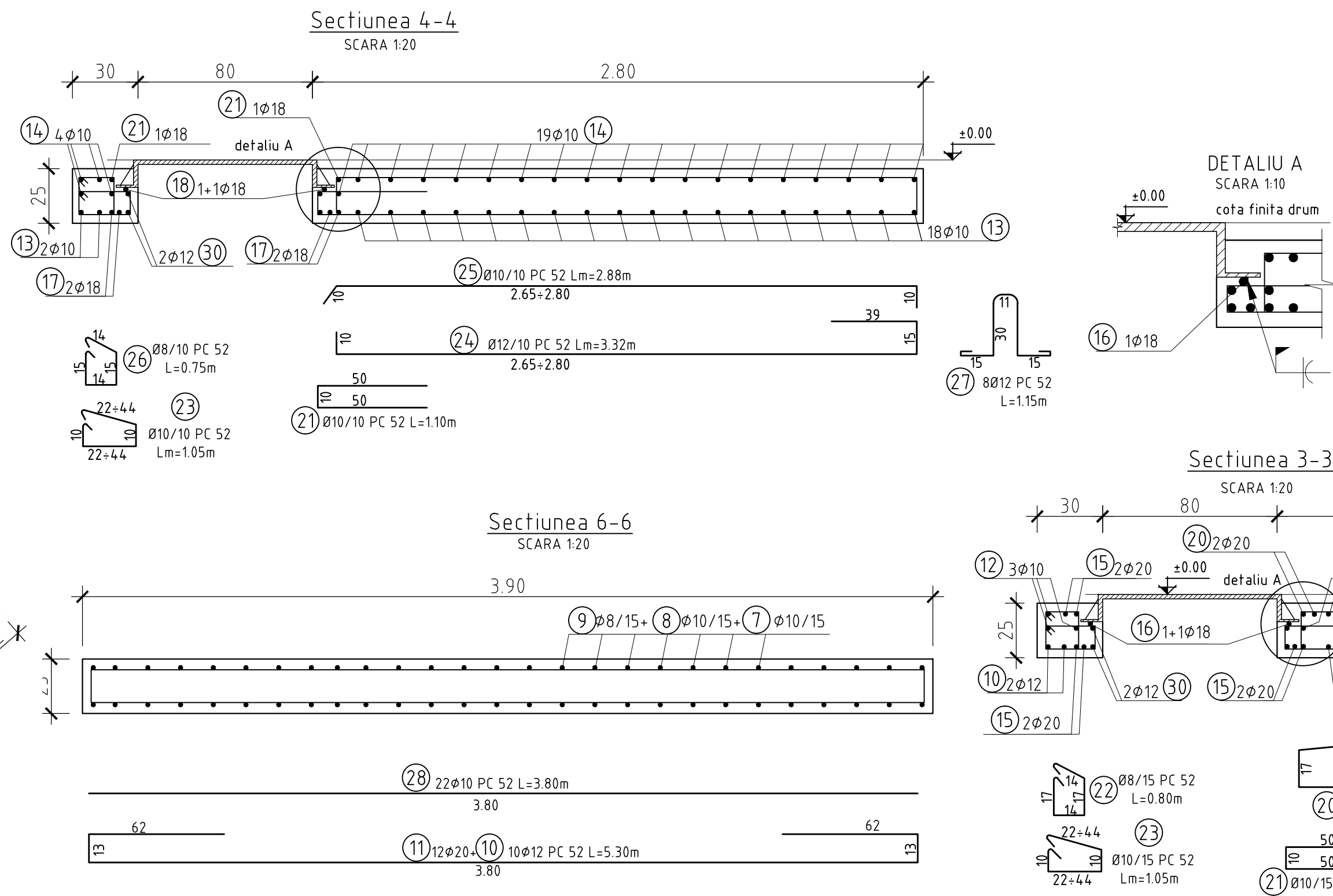
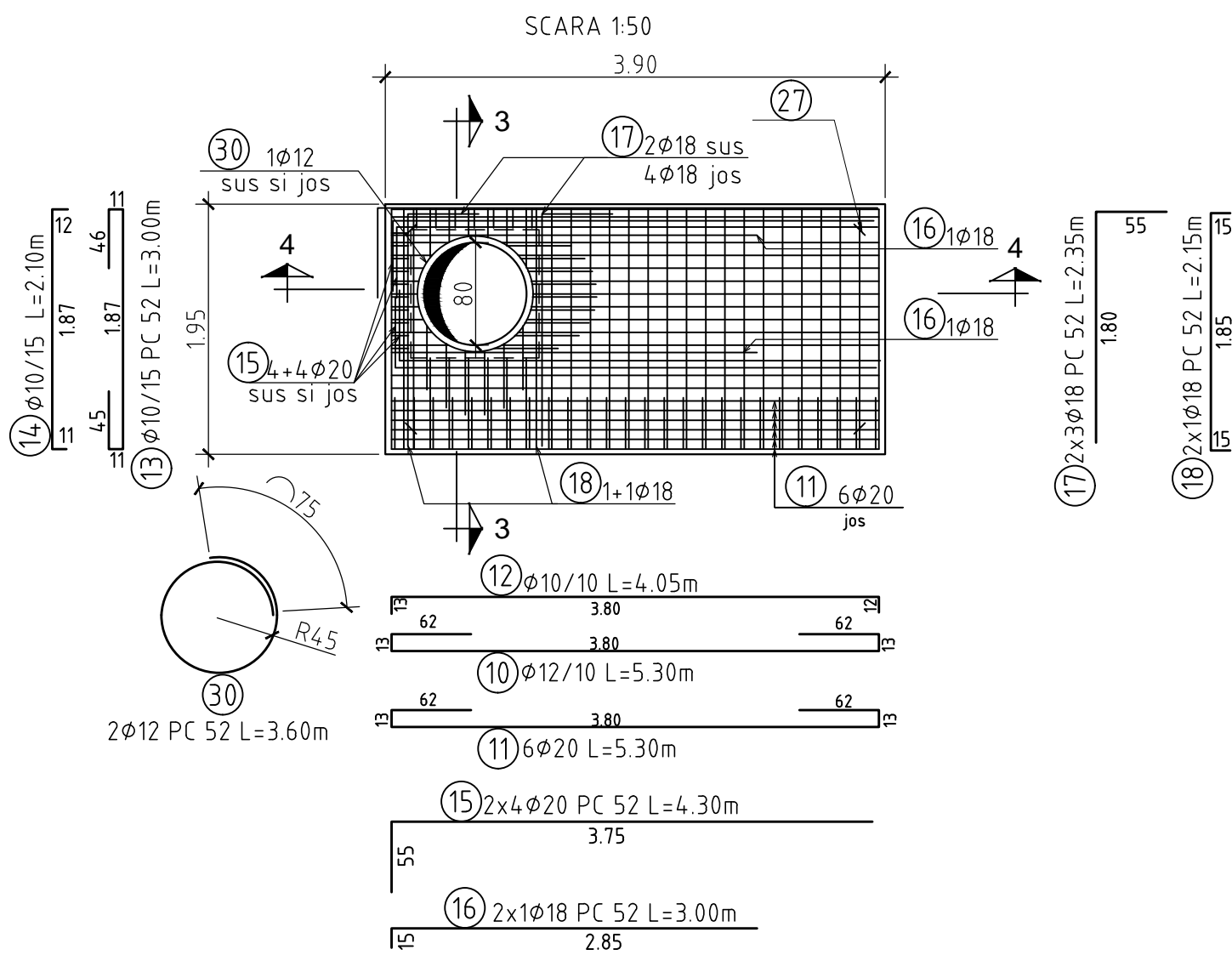
PLAN ARMARE CAMIN TIP 26



PLAN ARMARE PLACA PREFABRICATA P2-1 BUC
SCARA 1:50



PLAN ARMARE PLACA PREFABRICATA P1 -1 BUC



Extras de armadura

[illegible]

NOTA:
-Acoperirea nominala cu beton a armaturilor este

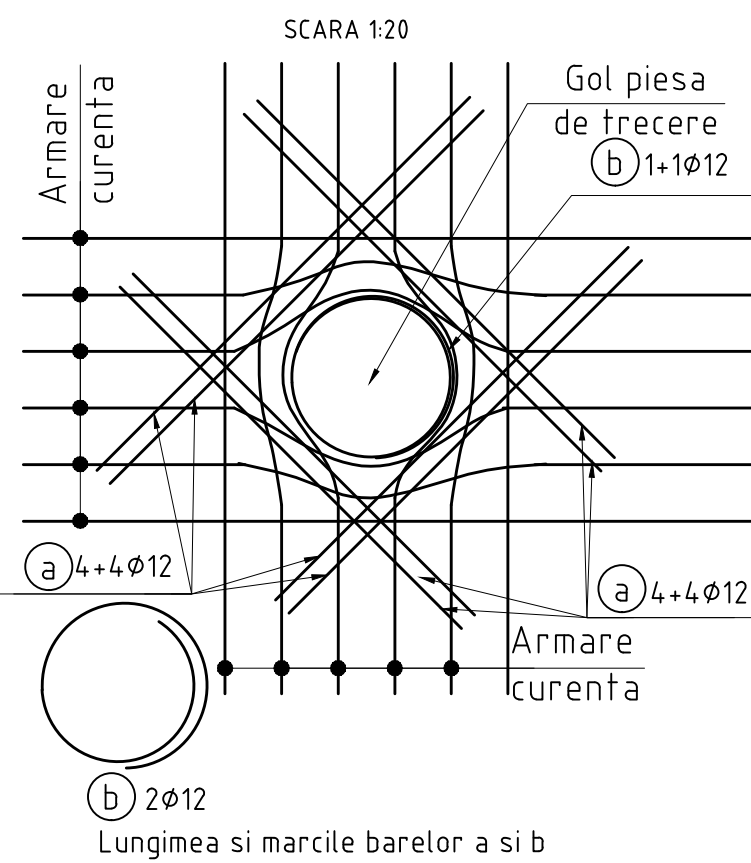
- | | |
|-----------------|----|
| -radier | 45 |
| -pereti | 40 |
| -placa interior | 20 |
| exterior | 30 |

- Zona superioara a caminului se va betona pana la cota 0.00(cota finita drum), daca partea carosabila nu este din asfalt.
- Prezenta plansa se va citi impreuna cu plansele de instalatii hidraulice.
- Capacul va fi carosabil cu rama patrata, clasa D 400.
- Dimensiunile partiale ale armaturilor sunt cotate la interior.

BETON DE EGALIZARE
BETON ARMAT
OTEL BETON

C8/10,X0,Dmax 32,S3,CEM II B-M (S-LL) 32.5 R
C 25/30,XC4,XF3,C10.2,Dmax 22,S3,P4,CEM II/A-S 32.5R
OB 37, PC 52

Detaliu armare goluri piese de trecere



DN	Barra marca a		Barra marca b	
mm				
110	34	1.60	35	1.10
250	36	1.75	37	1.60
315	38	1.80	39	1.80
400	40	1.85	41	2.00

Rev	Nume	Ver	Apb	Data	Descriere

Autoritatea contractanta: **S.C.AQUACARAS S.A. CARAS SEVERIN**



Adresa: P-ta Republicii, nr. 7, Resita
Jud. Caras Severin
Tel.: +40 255 212 458
Fax.: +40 255 214 421
E-mail: office@aquacaras.ro

Proiectant: **Consortiu S.C Eptisa Romania**
S.R.L. si Eptisa Servicios de Ingenieria S.L.
Șos. Dudaș-Pantelimon nr. 42, RAMS center, et. 5, corp A,
sector 3, București
Tel: + 40 21 301 14 70
Fax: + 40 21 301 14 80
www.eptisa.com

eptisa

Proiect:
MODERNIZAREA INFRASTRUCTURII DE
APA SI APA UZATA IN JUDETUL
CARAS SEVERIN - AGLOMERAREA RESIT
Plansa:

Retele apa
Camin tip 26-Plan Armare

Desenat:	Ing. B. Paraschiv	Data:	Aprilie 2017	
Verificat:	Ing. M. Serbanoiu	Data:	Aprilie 2017	
Aprobat:	Ing. D. Spiridon		Data:	Aprilie 2017

Plansa nr.	Revizia
CS-RE-PT/DA-A-R-26.2	0